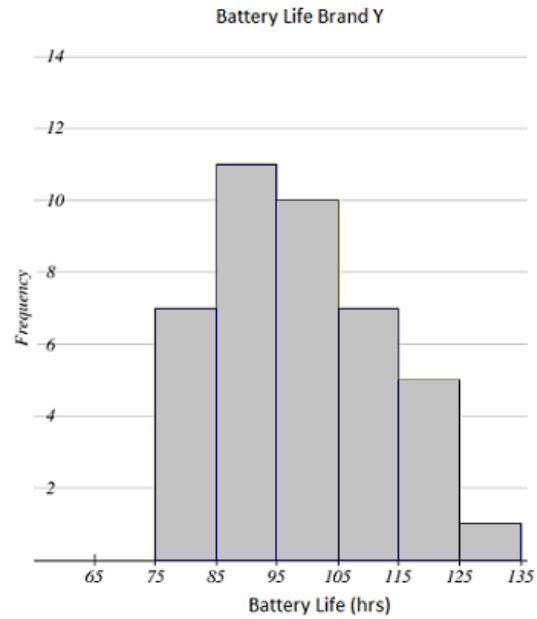
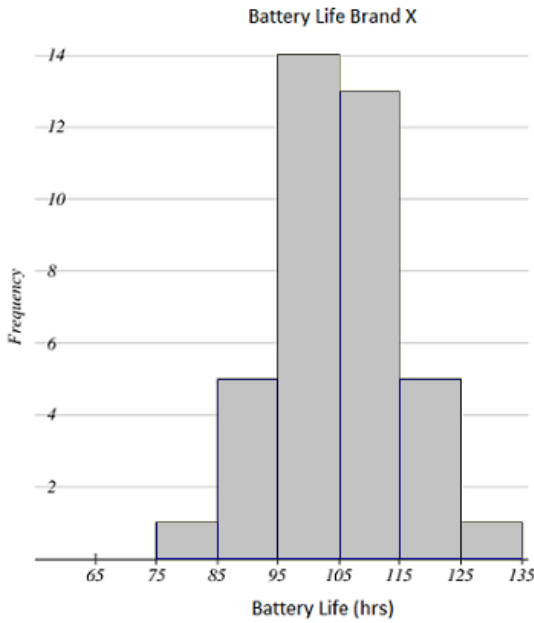


HOMEWORK: ANALYZING DATA DISTRIBUTION

A group of students wanted to find out how long two different brands of AA batteries lasted. The two histograms below show the data distributions for how long (in hours) some of the batteries of two different brands lasted.

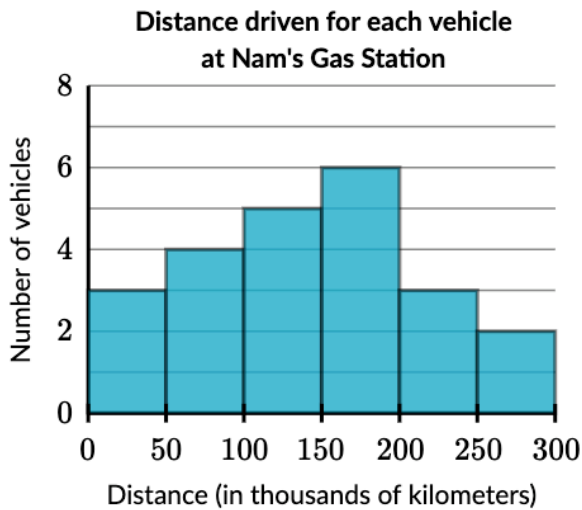


- a. Describe the shape of the distribution for each battery brand. Explain if either graph shows symmetry and/or skewness.

- b. Which battery would you recommend to others to buy? Why?

Answer each question using the histograms.

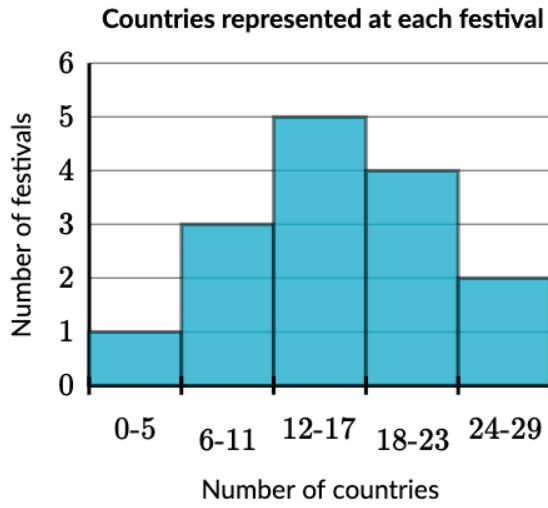
1.



How many more vehicles have been driven between 50 and 100 thousand kilometers than between 250 and 300 thousand kilometers?

vehicles

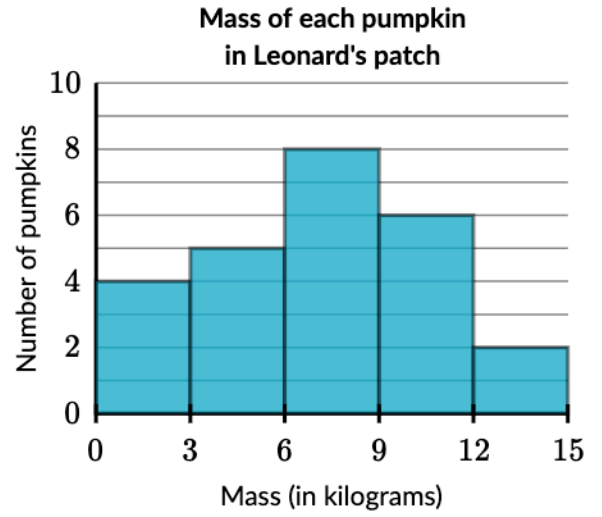
2.



How many festivals were there?

festivals

3.



How many pumpkins have a mass greater than 6 kg?

pumpkins

4. What is the shape of the distribution shown below?

Choose 1 answer:

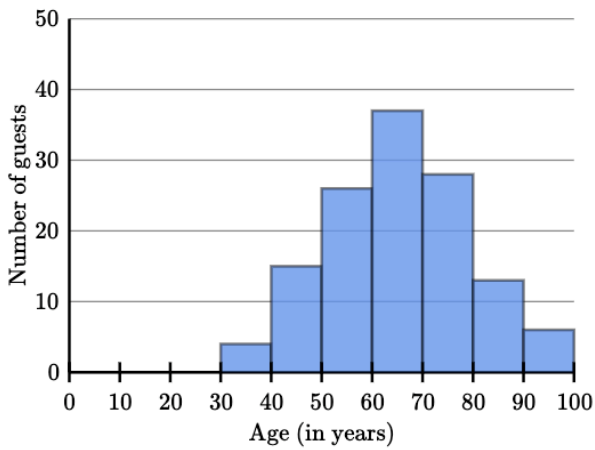
- (A) The distribution is skewed to the left.
- (B) The distribution is approximately symmetrical.
- (C) The distribution is skewed to the right.

5. What is the shape of the distribution shown below?

Choose 1 answer:

- (A) The distribution is left-tailed.
- (B) The distribution is approximately symmetrical.
- (C) The distribution is right-tailed.

Retirement age of each guest at Logan Assisted Living



Number of U.S. States visited by each Wing Airlines pilot

